



# ANNUAL REPORT 2016

DOVETAIL PARTNERS, INC.

528 Hennepin Ave., Suite 703

Minneapolis, Minnesota 55403 USA

[www.dovetailinc.org](http://www.dovetailinc.org)

+1 612-333-0430

***“The environment is everything that isn’t me.”***

**- Albert Einstein, 1879-1955**

## **Table of Contents**

---

### **Mission Statement**

### **Programs**

*Certification*

*Green Building*

*Land Use*

*Responsible Materials*

### **Annual Highlight**

*Unleashing the Power of People: A Guide to Organizing People and Systems*

### **Publications & Newsletters**

*Commentaries*

*Reports*

### **News**

*News Releases*

*In the News*

### **Dovetail Board, Advisors, Staff & Interns**

### **Financial Statement**

### **Sponsors and Supporters**

**Dovetail Mission Statement**

*Dovetail Partners provides authoritative information about the impacts and trade-offs of environmental decisions, including consumption choices, land use, and policy alternatives.*

## **Programs**

### ***Certification***

Dovetail promotes activities that conserve the world's natural resources, including forests. Dovetail envisions a world where forests encompass the full spectrum of ecological attributes, and the industries and rural communities dependent on these forests thrive both economically and socially through their support of these attributes. Dovetail pursues this vision by supporting innovative approaches to sustainable forestry, such as forest certification, and recognizes people are a key resource for addressing the issues of sustainability.

### ***Green Building***

Dovetail provides information and assistance related to many of the currently available green building programs. Our staff is experienced with green building practices, program standards, and project registration and certification processes. Dovetail is active in a number of green building programs including United States Green Building Council (USGBC), Minnesota GreenStar, Minnesota Green Communities, and LEED.

### ***Land Use***

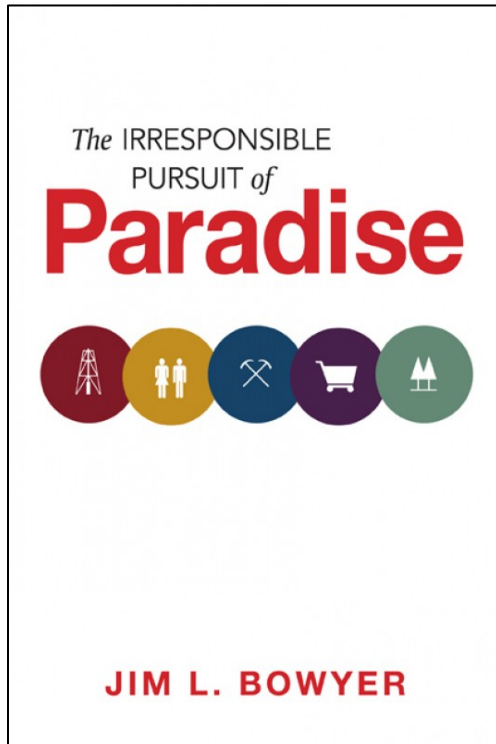
Dovetail recognizes the links between sustainable forestry, responsible trade and consumption, and land use. Dovetail is interested in promoting land use research and planning and innovative programs that encourage and reward responsible land use activities. Dovetail is specifically interested in addressing and minimizing land use impacts on soil and water resources.

### ***Responsible Materials***

Dovetail analyzes information about various materials in a way that best helps organizations and individuals make sustainable choices that they wholly understand. Dovetail also tracks trends and developments related to material reuse and recycling. In order to support the development of responsible material production standards, Dovetail is a member of the Sustainable Furnishings Council as well as the NSF Joint Committee on Dimensional Stone Sustainability.

## Annual Highlight

### **New Book by Dr. Jim Bowyer Examines Global Environmental Impacts**



In 2016, Dovetail announced the release of *The Irresponsible Pursuit of Paradise* that examines global environmental impacts of high consumption, raw material procurement, and environmental policies.

Author Jim Bowyer examines environmental policies of the U.S. and other wealthy countries related to raw material extraction which often result in a transfer of environmental impacts to the less wealthy. Bowyer observes that "...contrary to common practice today, high consuming nations need to be asking, 'Why not in my back yard?'"

The book begins with a quest to discover the secrets of Paraíso, an imaginary kingdom that is a paradise in both name and appearance. However, this book mostly dwells in the land of pure non-fiction, being an investigation of the actions of the residents of a present-day, real-life paradise as they strive to keep what they have. It is a story of unawareness, denial, hypocrisy, and a great deal of wishful thinking. And, finally, it is a story of needs for change.

In one part of the book, Bowyer assesses actions of a number of U.S. Chief Executives often considered the best environmental Presidents. He observes that they often mandated actions to protect the domestic environment with little or no consideration of high levels of domestic consumption, or the massive importation of raw materials that support that consumption. There is similarly seldom evidence of thinking about how environments of other nations might be impacted as a result of increasing raw material importation. Bowyer notes that this kind of provincial positioning is not limited to the U.S., but characterizes pervasive thinking across society and all levels of government in economically developed countries all over the world.

An important work of our time, *The Irresponsible Pursuit of Paradise* is available through book stores and on-line at [Itasca Books HERE](#).

## **Publications & Newsletters**

Dovetail publishes a monthly e-newsletter, *The Outlook*, with information about our latest publications, news and events.

### ***Commentaries***

Commentaries are briefs presenting the opinions and ideas of Dovetail Staff and Associates.

### ***Reports***

Dovetail reports address a wide range of topics and issues related to sustainable forestry, responsible materials, responsible consumption and organizational development.

## **News**

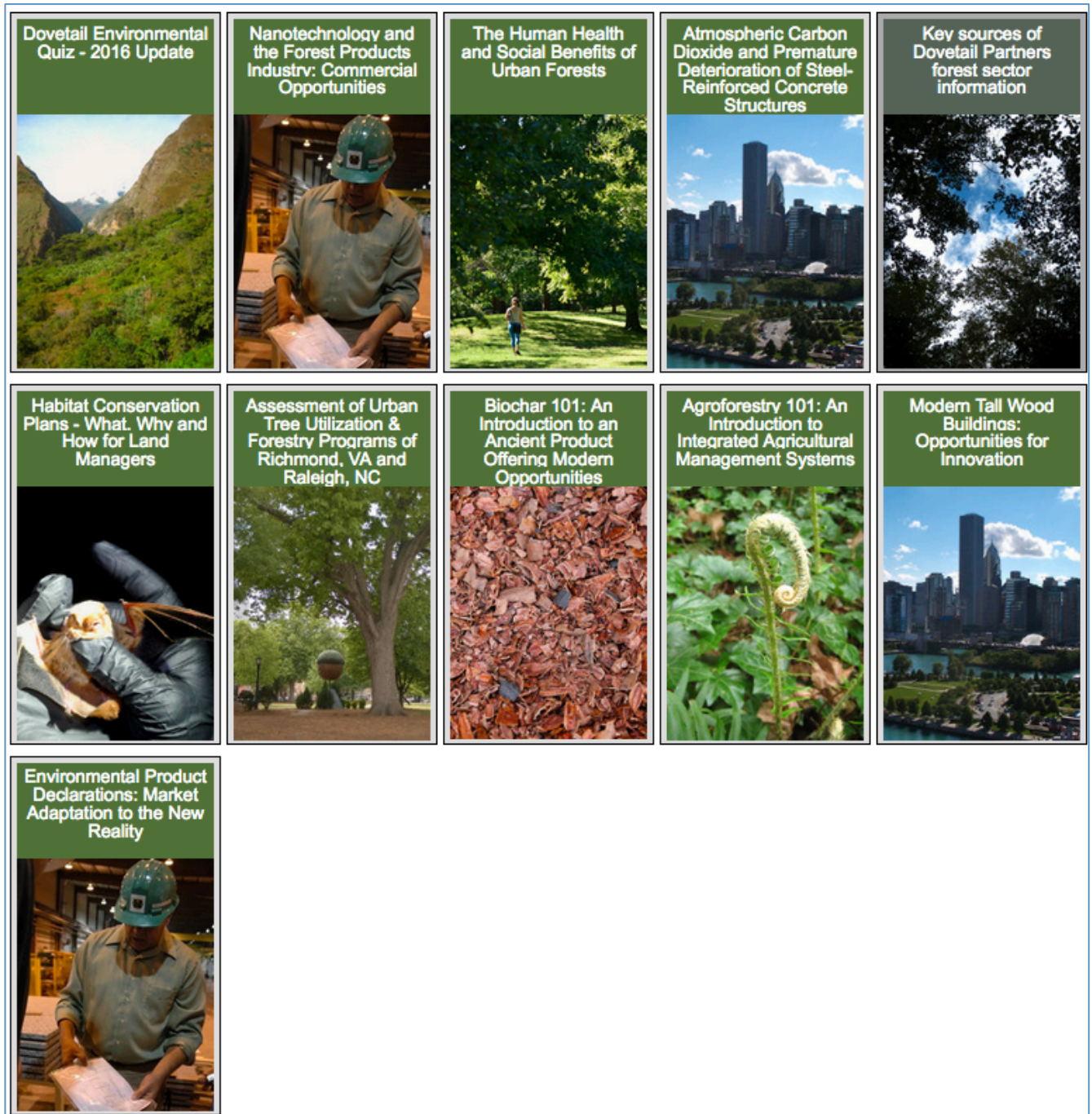
### ***News Releases***

Dovetail publishes news releases regarding new publications, projects, and services, additions to our team, and areas of growth and expertise.

### ***In the News***

Dovetail's commentaries, reports and news releases are often reprinted and referenced in mass media, journal articles, newsletters and publications from diverse organizations.

## 2016 Reports



Access the complete articles online at: [www.dovetailinc.org/reports](http://www.dovetailinc.org/reports)

## **2016 News Releases**

- 12/13/16 [Join Dovetail at Michigan Forest Bioeconomy Conference](#)
- 11/18/16 [Real vs. Artificial Christmas Trees - An Environmental Perspective](#)
- 10/28/16 [Join Dovetail Partners at the SAF National Convention](#)
- 10/26/16 [Join Dovetail at the 2016 Central Florida Wood Solutions Fair](#)
- 10/12/16 [Minnesota River Project Seeks Broad-Based Support for Cleaner Water](#)
- 10/6/16 [Join Dovetail at the 2016 Mid-Atlantic Wood Solutions Fair](#)
- 10/4/16 [5th Annual Heating the Midwest Conference & Expo, Oct 11-13th](#)
- 9/29/16 [Join Dovetail at Greenbuild](#)
- 9/19/16 [Join Dovetail at Twin Cities Urban Ag Research Workshop on October 5th](#)
- 9/12/16 [Join Dovetail Partners at 7th National Small Farms Conference](#)
- 9/7/16 [State and Private Forestry Report Highlights Accomplishments and Emerging Trends in Forestry](#)
- 9/6/16 [5th Annual Heating the Midwest Conference & Expo - Early Bird ends Sept 8th!](#)
- 9/1/16 [New Book by Dr. Jim Bowyer Examines Global Environmental Impacts](#)
- 8/22/16 [Join Dovetail Partners at the Northern Virginia Urban Forestry Quarterly Roundtable](#)
- 8/15/16 [Join Dovetail Partners at Biochar 2016](#)
- 8/11/16 [Southeastern U.S. States Release New Urban Forest Fast Breaks for Back-to-School](#)
- 8/9/16 [Join Dovetail Partners at the International Society of Arboriculture's Annual Conference, August 13-17, 2016](#)
- 7/28/16 [Minnesota Agroforestry Institute to be held Aug 29-31](#)
- 7/26/16 [Forest Tour Highlights Bat Friendly Forestry in Minnesota](#)
- 7/25/16 [New Book by Dr. Jim Bowyer Ready for Pre-Sale Orders](#)
- 6/29/16 [5th Annual Heating the Midwest Conference & Expo Registration Now Open](#)
- 6/23/16 [Dovetail Partners Welcomes Dr. Richard A. Levins of Levins Publishing as New Associate](#)
- 6/21/16 [Join Dovetail Partners at the 2016 Forest Stewards Guild National Meeting](#)
- 5/19/16 [Join Dovetail Partners at the 2016 Urban Food Systems Symposium](#)
- 5/17/16 [Carlton and Aitkin County, Minnesota Recognized for Leadership in Research of Northern Long-eared Bat](#)
- 5/13/16 [Join Dovetail Partners at the 2016 American Institute of Architects Convention](#)

- 5/4/16 [Join Dovetail Partners at the Southern Wood Utilization Education Summit](#)
- 4/22/16 [Celebrate Ecosystem Resilience and the Importance of Sustainable Forest Management on Earth Day](#)
- 4/19/16 [Join Dovetail Partners at the 2016 Northwest Wood Solutions Fair](#)
- 4/14/16 [New Eco-Link Highlights Citizen Science History, Process, Benefits and Room for Improvement](#)
- 3/24/16 [5th Annual Heating the Midwest Conference & Expo to Occur this Fall](#)
- 3/23/16 [Join Dovetail Partners at an Innovations in Wood Design Seminar on April 21st](#)
- 3/22/16 [Join Dovetail Partners at the American Association of Geographers Annual Meeting on March 29th](#)
- 3/16/16 [Join Dovetail Partners at the 2016 Midwest Wood Solutions Fair](#)
- 3/15/16 [Dovetail Partners Encourages Celebration of Forests and Water Quality on March 21st](#)
- 3/2/16 [Join Dovetail Partners During March 9th Woodworks Webinar](#)
- 2/22/16 [Dovetail Partners Encourages Celebration of Relationship Between Forests and Water Quality in 2016](#)
- 2/19/16 [Fire Adapted Communities Learning Network Launches New Website with Focus on Resources and Building Community Connections](#)
- 2/17/16 [Sustainable Forestry Teachers' Tours Provide Educators with Firsthand Experiences in 2016](#)
- 2/11/16 [Forestinfo Releases New Forest Fast Breaks Highlighting Urban Forests](#)
- 2/9/16 [Dovetail Partners Announces Focus on Influencing Agricultural Practices, Welcomes Matt Frank as New Director of Regenerative Design & Sustainable Food Systems, Begins Incubating From the Ground Up North](#)
- 1/20/16 [MN State Wood Innovation Team Encourages Local Firms to Attend the Upcoming Mass Timber Conference](#)
- 1/14/16 [Dovetail Partners Congratulates Coldspring on Certification for Sustainable Production of Natural Dimension Stone](#)

*Access the complete news releases online at: [www.dovetailinc.org/news](http://www.dovetailinc.org/news)*

## **Dovetail in the News in 2016**

[A champion for community wildfire safety](#)

**Minnesota Department of Public Safety** October 2016

[Teacher Resources on Paper, Forest Products, and the Environment \(K-Grade 6\)](#)

**Two Sides** October 2016

[Why Choose Wood? Making the Case for Sustainability](#)

**Building Products Digest** June 2016

[Permaculture Design for Urban Gardens](#)

**Timberjay Newspaper** May 13, 2016

[Dovetail Partners joins 2016 Midwest Wood Solutions Fair](#)

**Woodworking Network** March 16, 2016

[Dovetail Partners Encourages Celebration of Forests and Water Quality on March 21st](#)

**Investorideas.com Newswire** March 2016

[Urban Forestry Fast Breaks](#)

**The Forestry Source** March 2016

[Saving America's Forests One Wooden High-rise at a Time](#)

**ClimateWire** February 16, 2016

[American Tree Farm System Celebrates 75 Years, Commits to Future](#)

**PRWeb** February 12, 2016

[Going Paperless Does Not Save Trees](#)

**Two Sides North America** February 8, 2016

Access the complete "Dovetail in the News" list at: [www.dovetailinc.org/news\\_pages/in\\_the\\_news](http://www.dovetailinc.org/news_pages/in_the_news)

## **Dovetail Board, Advisors, Staff & Interns**

### **Dovetail Board of Directors 2016**

Jeffrey Howe, Ph.D., *Chairman of Dovetail Partners*

Brian Adams, *Senior Vice President, Bremer Bank*

Jim Bowyer, Ph.D., *Bio-products and Environmental Consultant*

Edwin Chanin, *Attorney, Chanin Law Firm*

Jill Koosmann, *CEO, HRK Group, Inc.*

Michele Whyte, *Global Head of Sustainability & Quality, 3M Consumer Business*

### **Dovetail Board of Advisors 2016**

William Banzhaf, *Former President, Sustainable Forestry Board, Retired*

Paul DeLong, *Wisconsin State Forester, Wisconsin Department of Natural Resources, Division of Forestry*

R. Philip Guillery, *Systems Integrity Director, FSC*

Reginaldo Hasslett-Marroquin, *Director, Rural Enterprise Center*

Robert Hrubes, Ph.D., *Senior Vice President, Scientific Certification Systems, Forest Conservation Program*

Douglas MacCleery, *Senior Policy Analyst, Forest Management Division, National Forest System, Washington, D.C.*

Nick Martin, *Chief Technical Officer, American Carbon Registry*

### **Dovetail Staff 2016**

Jeffrey Howe, Ph.D., *President*

Kathryn Fernholz, *Executive Director*

Jim Bowyer, Ph.D., *Director of Responsible Materials Program*

Steve Bratkovich, Ph.D., *Project Manager for Recycling and Reuse*

Matt Frank, *Environmental Program & Research Associate*

Harry Groot, *Dovetail Associate*

Richard A. Levins, Ph.D., *Dovetail Associate*

Ed Pepke, *Dovetail Associate*

Gloria Erickson, *Dovetail Associate for Fire Adapted Communities*

### **Dovetail Interns 2016**

Rachel Benson, *Land Use*

Jenna Gustafson, *Environmental Education*

Meg Emory, *Policy & Responsible Materials*

Olivia Engel, *Land Use*

Pia Hanson, *Policy and Sustainability*

Erin Haug, *Renewable Energy*

Bailey Hollerud, *Responsible Materials & Renewable Energy*

Ethan Howard, *Green Building and Land Use Internship*

Que Nguyen, *Renewable Energy*

## **Financial Statement 2016**

Dovetail Partners, Inc.

*Statements of Financial Position*

December 31, 2016

### **Assets**

Cash	\$224,183
Investments	-
Grants and contracts receivable	78,032
Prepaid expenses	-
Total Current Assets	302,215
Property and Equipment - Net	<u>5,000</u>
<b>Total assets</b>	<b><u>\$307,215</u></b>

### **Liabilities and Net Assets**

#### Liabilities:

Accounts payable	\$41,161
Accrued wages and payroll taxes	12,730
Funds held for others	-
Total current liabilities	<u>53,891</u>

#### Net assets:

Unrestricted	215,281
Temporarily restricted	<u>38,043</u>
Total net assets	<u>253,324</u>
<b>Total liabilities and net assets</b>	<b><u>\$307,215</u></b>

Dovetail Partners, Inc.

*Statements of Activities and Changes in Net Assets*

December 31, 2016

	<b>Unrestricted</b>	<b>Temporarily Restricted</b>	<b>Total</b>
<b>Support &amp; Revenue</b>			
Grants and Contributions	\$43,948	\$65,000	\$108,948
Fees for Service	463,494	-	463,494
Sales	283	-	283
Interest Income	82	-	82
Miscellaneous Income	-	-	-
Net Assets Released from Restrictions:			
Satisfaction of Program Restrictions	45,040	(45,040)	-
<b>Total Support and Revenue</b>	<b>552,847</b>	<b>19,960</b>	<b>572,807</b>
<b>Expenses</b>			
Program Services	481,326	-	481,326
Support Services:			
Management and General	44,362	-	44,362
Fundraising	13,923	-	13,923
<b>Total Support Services</b>	<b>58,285</b>	<b>-</b>	<b>58,285</b>
<b>Total Expenses</b>	<b>539,611</b>	<b>-</b>	<b>539,611</b>
<b>Change in Net Assets</b>	<b>13,236</b>	<b>19,960</b>	<b>33,196</b>
<b>Net assets – Beginning of Year</b>	<b><u>202,045</u></b>	<b><u>18,083</u></b>	<b><u>220,128</u></b>
<b>Net assets – End of Year</b>	<b><u>\$215,281</u></b>	<b><u>\$38,043</u></b>	<b><u>\$253,324</u></b>

Dovetail Partners, Inc.

*Statement of Functional Expense*

December 31, 2016

	<b>Program Services</b>	<b>Management and General</b>	<b>Fundraising</b>	<b>Total Support Services</b>	<b>Total All Services</b>
<b>Expenses</b>					
Salaries	\$188,992	\$29,962	\$11,524	\$41,486	\$230,478
Payroll Taxes	<u>14,745</u>	<u>2,338</u>	<u>899</u>	<u>3,237</u>	<u>17,982</u>
Total Personnel Costs	203,737	32,300	12,423	44,723	248,460
Consulting	175,946	-	-	-	175,946
Staff Mileage/Travel	51,425	-	-	-	51,425
Program Expense	23,427	-	-	-	23,427
Occupancy	9,506	1,507	580	2,087	11,593
Accounting	-	8,164	-	8,164	8,164
Miscellaneous	4,205	666	256	922	5,126
Telephone/Internet	3,644	578	222	800	4,444
Insurance	2,748	436	168	604	3,352
Dues/Subscriptions	2,201	-	-	-	2,201
Printing and Copying	1,192	189	73	262	1,454
Marketing/Advertising	701	111	43	154	855
Office Supplies	544	86	33	119	663
Depreciation	<u>2,050</u>	<u>325</u>	<u>125</u>	<u>450</u>	<u>2,500</u>
<b>Total Expenses</b>	<b>\$481,326</b>	<b>\$44,362</b>	<b>\$13,923</b>	<b>\$58,285</b>	<b>\$539,611</b>

Dovetail Partners, Inc.  
*Statements of Cash Flows*  
December 31, 2016

**Increase (Decrease) in Cash and Cash Equivalents**

Cash Flows from Operating Activities:

Change in Net Assets	\$33,196
Adjustments to Reconcile Change in Net Assets to Net Cash Provided (Used) by Operating Activities	
Depreciation Expense	2,500
Increases (Decreases) in Current Liabilities:	
Accounts Payable	13,727
Accrued Wages and Payable Taxes	(5,422)
Funds Held for Others	-
Decreases (Increases) in Current Assets:	
Grants and Contracts Receivable	<u>5,842</u>
Net Cash Provided (Used) by Operating Activities	49,843

Cash Flows from Investing Activities:

Purchase of Property and Equipment	-
------------------------------------	---

Cash Flows from Financing Activities:

None	<u>-</u>
------	----------

**Net (Decrease) in Cash and Cash Equivalents** 49,843

**Cash and Cash Equivalents – Beginning of Year** 174,340

**Cash and Cash Equivalents – End of Year** \$224,183

## ***Special thanks to our sponsors and supporters!***

Amazon Smile  
Applied Ecological Services  
Blandin Foundation  
Cold Spring  
Columbia Forest Products  
Georgia Pacific  
Ketcham Forest Products, inc.  
Levy Tree Care, LLC  
Norbord Industries  
Packaging Corporation of America  
Prairie Foundation  
Sappi  
Susan I. Marvin Fund  
Time, Inc.  
UPM Blandin Paper Comoany  
USDA Forest Service  
Vital Systems  
Weyerhaeuser Foundation  
Wood from the Hood

Brian Adams  
Cheryl Adams  
Jessica and Joao Basilio  
Robert Beer  
Stephanie Berkland  
Jim and Ruth Bowyer  
John Bradfield  
Steve and Janet Bratkovich  
Eric and Constance Carlson and Family  
Edwin Chanin  
Fred Clark  
Patrick de Freitas  
Paul Delong  
Amber Ellering  
Christian and Kedzie Fernholz  
Sally and Carmen Fernholz  
Kay and Annette Fernholz  
Robert Fisher  
Matt Frank  
Jonathan Hanessian  
Rollie Henkes  
Kathleen Hiltzley

Heather Himler  
Jeff Howe  
Mark Jacobs  
Jill and Charles Koosmann  
Doug MacCleery  
Wayne & Bobbi Mahood  
Robert Malmsheimer  
Shawn Markham  
Jim Marshall  
Tom Martin  
Thomas McLain  
Jean-Claude Mercier  
Gerry Mich  
Colin and Martha Mosely  
Greg Nolan and Marcia Rapatz  
Susan Odell  
Mary Lu Osterberg  
Douglas Rau  
Neil Sampson  
Robert Scheierl  
Bruce Schoenberg  
Thomas Schubert  
Kathleen Sims  
Robert and Ingrid Sonnenberg  
Sarah Stai  
Brad Thompson  
Charles Thompson  
Robert Tomlinson  
Beth Waterhouse  
Robert Westfall  
Adam Zoet

...and additional anonymous donors

*Thank you!*



**DOVETAIL PARTNERS, INC.**

528 Hennepin Ave., Suite 703

Minneapolis, Minnesota 55403 USA

[www.dovetailinc.org](http://www.dovetailinc.org)

+1 612-333-0430

© 2017